

THE

FOCUS

BURLINGTON AREA SCHOOL DISTRICT

NEWSLETTER

WINTER 2024

WHAT'S INSIDE:

- REPORT CARD HIGHLIGHTS
- INNOVATION IN BASD
- MATH, ELA, & ACT DATA
- COLLEGE, CAREER, & LIFE READY
- HEALTH SCIENCE PATHWAY
- TECHNOLOGY EDUCATION
- BUSINESS PARTNERSHIPS
- SCIENCE OF READING
- REFERENDUM KNOWLEDGE



B

Compassionate - Committed - Comprehensive

BASD **EXCEEDED** EXPECTATIONS

ON THE 2023-2024 STATE REPORT CARD

BASD'S 2023-2024 DISTRICT REPORT CARD

70.5 ★★★★★☆

The Burlington Area School District Report Card has hit an **EXCEEDING EXPECTATIONS** score of 70.5 on the 2023-2024 State Report Card. BASD is proud to return to the category of Exceeding Expectations as a K-12 system with 1 school significantly exceeding expectations, 4 schools exceeding expectations, 1 school meeting expectations, and 1 school failing to meet expectations.



Elementary Schools

- COOPER MONTESSORI - **EXCEEDS EXPECTATIONS!**
 - ENGLISH LANGUAGE ARTS GROWTH EXCEEDS THE STATE AVERAGE.
- DYER ELEMENTARY - **EXCEEDS EXPECTATIONS!**
 - ENGLISH LANGUAGE ARTS GROWTH EXCEEDS THE STATE AVERAGE.
- LYONS CENTER ELEMENTARY - **EXCEEDED EXPECTATIONS!**
 - THOUGH BASD HAD TO CLOSE LYONS WE ARE PROUD OF THE WORK OF OUR LYONS STUDENTS AND STAFF AND WILL SEE THEIR GROWTH CONTINUE ACROSS OUR OTHER SCHOOLS AS WE MOVE FORWARD!
- WALLER ELEMENTARY - **EXCEEDS EXPECTATIONS!**
 - HAD BASD'S HIGHEST ELEMENTARY REPORT CARD SCORE OF 76.3.
- WINKLER ELEMENTARY - **MEETS EXPECTATIONS!**
 - ENGLISH LANGUAGE ARTS GROWTH EXCEEDS THE STATE AVERAGE.



Karcher Middle School

- KARCHER SCORED AN 84.7 ON THE SCHOOL REPORT CARD WHICH **SIGNIFICANTLY EXCEEDS EXPECTATIONS** - THE HIGHEST POSSIBLE CATEGORY!
- KARCHER STAFF AND STUDENTS **OUTPERFORMED 96.3% OF ALL 6TH-8TH GRADE SCHOOLS IN THE STATE** OF WISCONSIN WHEN IT COMES TO ACADEMIC GROWTH FOR STUDENTS!



Burlington High School

WHILE BHS'S CURRENT SCORE MAY NOT YET MEET ALL EXPECTATIONS, WE REMAIN OPTIMISTIC ABOUT THE FUTURE AND THE CONTINUED SUCCESS OF OUR STUDENTS AND STAFF. SCHOOL REPORT CARDS ARE BASED ON DATA FROM THE PAST THREE YEARS.

WE ARE EXCITED TO SHARE THAT **BHS HAS ACHIEVED THE 2ND HIGHEST ACT COMPOSITE SCORE IN THE SOUTHERN LAKES CONFERENCE!** THIS REFLECTS THE HARD WORK AND DEDICATION OF OUR STUDENTS, TEACHERS, AND STAFF.

LOOKING AHEAD, WE ARE COMMITTED TO CONTINUED GROWTH AND IMPROVEMENT. WE ARE CONFIDENT FUTURE SCORES WILL BETTER REFLECT THE PROGRESS OUR SCHOOL COMMUNITY HAS MADE THROUGH OUR COLLECTIVE EFFORTS.

TOGETHER, WE WILL KEEP PUSHING FORWARD TO ACHIEVE EVEN GREATER ACCOMPLISHMENTS IN THE YEARS TO COME!

B BASD Proud!

INSPIRING & INNOVATIVE

HAPPENINGS SO FAR THIS SCHOOL YEAR...

SCIENCE OF READING ELA CURRICULUM IMPLEMENTATION

Amplify CKLA (K-5), Amplify ELA (6-8), and StudySync (9-10) are high quality ELA curriculums used across BASD to ensure all students have access to high quality, science of reading-based curriculum.



INCREASED STEAM PROGRAMMING

Science - Technology - Engineering - Art - Math

Kindergarten and 1st grade have added Project Lead the Way (PLTW) courses to their science programming. Now, ALL students in grades 5K through high school can engage in STEAM learning!



PROJECT REALITY @ KMS

8th graders at Karcher are engaging in Project Reality where they work with businesses & colleges within the area on financial literacy through real-world simulations!



WELDING ACADEMY @ BHS

For the first time, BASD has partnered with Gateway Technical College to offer an onsite Welding Academy for students at BHS where those who complete the program will receive a Welding Technical Diploma from Gateway while at BHS.



10 STUDENTS COMPLETED CNA CERTIFICATION @ BHS

A cohort of 10 students successfully completed the Gateway Nursing Assistant course in our very own Nursing Skills Lab at BHS.



BASD THEATRE & PRODUCTION

BHS One Act production of The Lost Boy qualified for State and brought home numerous awards!

- Critics Choice Award
- Outstanding Ensemble Acting
- Outstanding Technical Theatre
- Outstanding Directing

Star Stuff Theatre had 60+ students (grades 3-8) perform Finding Nemo Jr. with 3 shows with community attendance over 300+.



1ST YOUTH MENTAL HEALTH RESOURCE FAIR

Our pupil services team put together BASD's first-ever mental health resource fair to assist with mental health awareness and support for all students, families, and the community.



PARTNERING WITH THE RACINE LITERACY COUNCIL

BASD is partnering with the Racine Literacy Council to provide literacy support to any and all families with students ages 3 through 18.



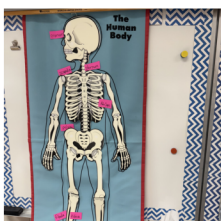
1ST CAR SEAT SAFETY CLINIC

Our health services team provided BASD's first-ever community car seat safety clinic this fall and looks forward to continuing to provide expertise to parents and members of the community.

GROWTH & ACHIEVEMENT



BASD is always focused on student growth and achievement academically while also ensuring we focus on continuing to support students, families, and the community through robust, rigorous, and supportive comprehensive offerings.

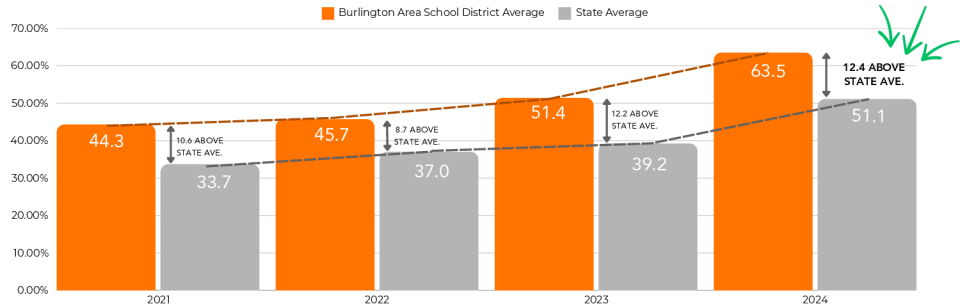


GROWING

Growing in ELA, Math, and ACT district wide!

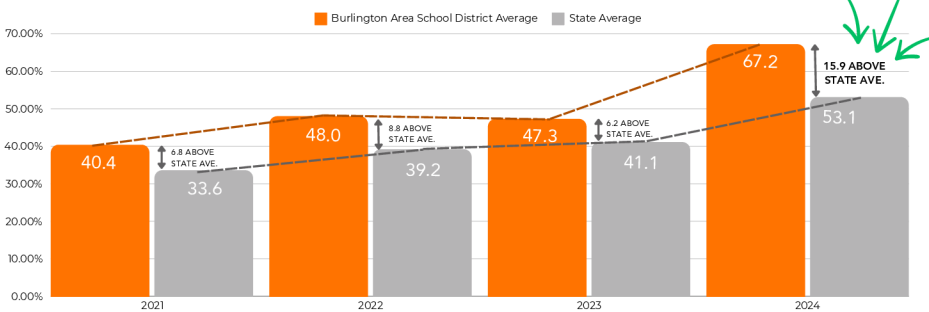


ENGLISH LANGUAGE ARTS DATA



BASD has made steady growth in the area of English Language Arts (ELA) on the Wisconsin Forward Exam. With an increase of 12.2% from 2023 to 2024, BASD is now 12.4% above the state average. BASD just adopted new ELA resources for grades 5K through 10th grade at the start of the 2024-2025 school year and looks forward to continued growth as we progress forward!

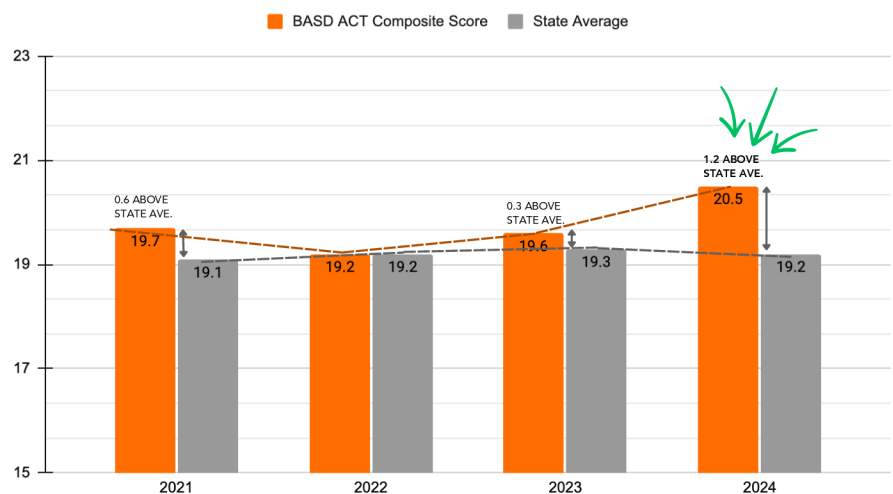
MATHEMATICS DATA



BASD students have made powerful growth in the area of Mathematics on the Wisconsin State Forward Exam. BASD is now 15.9% above the state average with an improvement of 19.9% (47.3% to 67.2%) from 2023 to 2024. Kudos to all of our students, staff, and families for their amazing growth and achievement!



ACT COMPOSITE DATA



BASD's ACT Composite data has made **significant gains** this last year with a 0.9 point increase (from an overall composite of 19.6 to a 20.5). In addition, BASD is 1.2 points above the state average. As a reminder, all students in the state of Wisconsin have to take the ACT in their junior year as the state-required assessment.

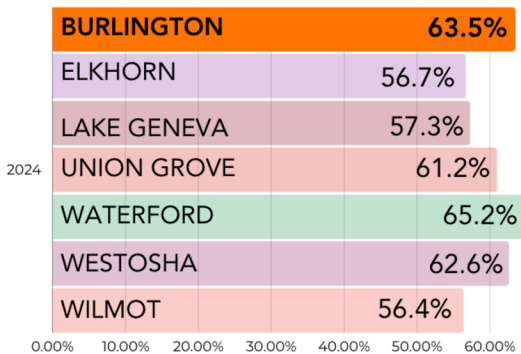




MEASURING UP!

How does BASD stack up against surrounding districts?

ENGLISH LANGUAGE ARTS (ELA) DATA



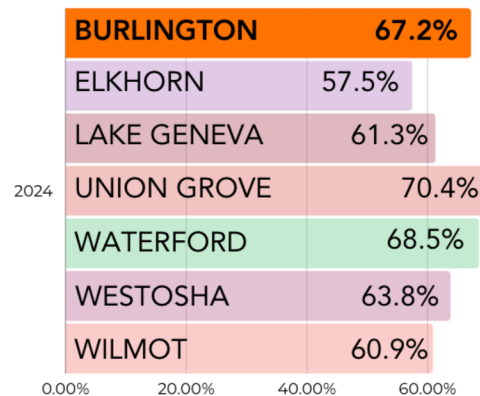
BASD is now second in our conference in ELA based on the WI Forward Exam. The Forward Exam is the state-required assessment for grades 3 through 8.

The data to the left indicates that 63.5% of our students in grades 3 through 8 are either proficient or advanced in English Language Arts.

BASD continues to implement the Science of Reading, researched-based best practices into classrooms to continue to grow! **BASD PROUD!**



MATHEMATICS DATA

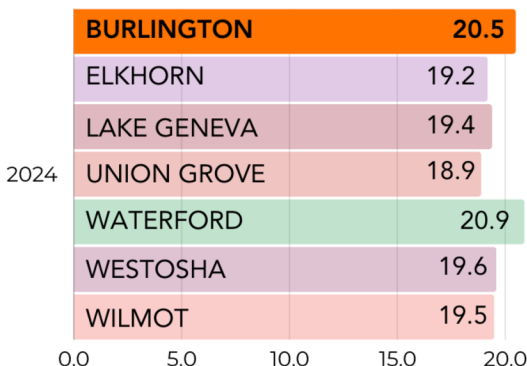


BASD is now third in our conference in Math based on the WI Forward Exam. The Forward Exam is the state-required assessment for grades 3-8.

The data to the left indicates that 67.2% of our students in grades 3 through 8 are either proficient or advanced in Mathematics.

Our staff collaborates and takes on a team approach to continually look for additional ways to engage and enhance the learning environment for students so we can continue on this positive trajectory across the district. **BASD PROUD!**

ACT COMPOSITE DATA

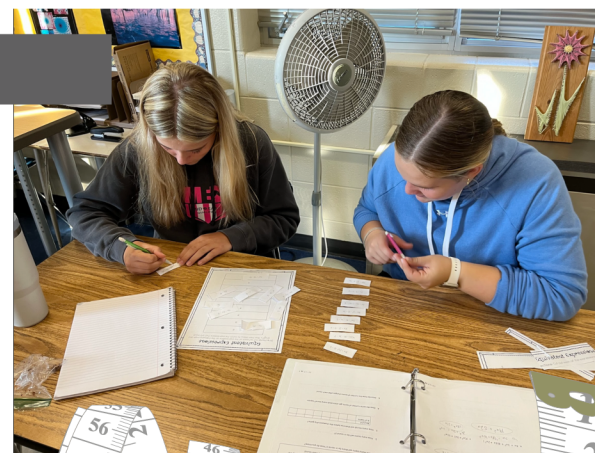


Burlington High School is now ranked second in our conference for the ACT Composite score!

The ACT is a required assessment taken in the spring of a student's junior year for all public schools in the state of Wisconsin.

Students not only engage in coursework aligned to the numerous career paths offered at BHS but also engage and prepare for the ACT through the use of practice assessments and/or problem sets in class to assist with their knowledge and skill development as they progress through high school.

BHS adopted a new math curriculum during the 2023-2024 school year and a new English curriculum for grades 9 and 10 for the start of the 2024-2025 school year. Our teams have been working diligently on their focus around standards and how to continually push students to a higher level through rigorous and comprehensive course offerings.





Rigorous Learning

Within BASD, we care about the ACT score, but also our team works to ensure all students are career, college, and life-ready. While at BHS, our students are exposed to numerous career pathways and the ability to enroll in dual enrollment courses while at BHS. **Dual enrollment** courses allow students to receive high school credits, but also earn college credits while in high school (hence the term “dual enrollment” = high school credit + college credit at the same time).

Additionally, our **Advanced Placement (AP)** offerings allow students to earn additional college-level credits. At the end of an AP course, students can take an AP exam and if they score a 3 or higher, they earn university credit while in high school.

Check out further information about dual enrollment and AP courses to the right



COLLEGE, CAREER, & LIFE READY



DUAL CREDITS EARNED IN 2023-2024

- **Transcripted Courses with Gateway:**
 - 594 students taught by BHS staff earned 1,755 Gateway College credits.
 - 20 transcripted courses with Gateway were taught at BHS.
- **VANguard Partnership with Gateway:**
 - 5 Gateway Virtual Courses taught at BHS with 114 students, earning 221 college credits.
- **Start College Now / Early College Credit Program:**
 - 30 students took 69 courses at 5 different Wisconsin Technical, University of Wisconsin, and private universities, earning 167 college credits.
- **Partnership in Education (PIE):**
 - 30 students taught by BHS staff earned a total of 96 college credits through UW-Whitewater.
- **Cooperative Academic Partnership Program (CAPP):**
 - 75 students taught by BHS staff earned a total of 226 college credits through UW-Oshkosh.
- **Parkside Access to College Credit (PACC):**
 - 14 students taught by BHS staff earned a total of 42 college credits through UW-Parkside.

BHS ADVANCED PLACEMENT COURSES

AP 2D Design	AP Human Geography	AP Psychology
AP 2D Drawing	AP Language & Comp.	AP Statistics
AP Biology	AP Music Theory	AP U.S. History
AP Calculus AB	AP Physics	AP World History
AP Calculus BC	AP Precalculus	
AP Chemistry		
AP Computer Science Principles		
AP Economics		
AP English		
AP Environmental Science		
AP European History		
AP Government & Politics		



2023-2024 AP Enrollment:

- 280 students enrolled in AP courses
- 233 AP exams were taken
- 84% of exams earned a score of 3+ which provides students with college credits!

Comprehensive Offerings



PROJECT LEAD

Project Lead the Way (PLTW) is a national, nonprofit organization that provides **STEM** (Science, Technology, Engineering, and Math) curriculum for students in PreK through 12th grade.

Unique to BASD, PLTW starts in Kindergarten and provides science, technology, engineering, and math coursework through 12th grade! Project Lead The Way (PLTW) courses provide students in the BASD with valuable opportunities to build essential skills in science, technology, engineering, and mathematics (STEM), all while fostering curiosity and a passion for innovation. Beginning at an early age, PLTW's hands-on, career-focused programs are designed to engage students and help them develop critical thinking skills through real-world, project-based learning.

These courses not only equip students with the knowledge they need for future success, but also allow them to explore a wide range of fields, including engineering, biomechanics, aeronautics, and other applied science and math disciplines. By connecting classroom learning to real-world applications, PLTW inspires students to pursue careers in STEM and prepares them for the challenges of tomorrow.

THE WAY



Thank you to **Ardagh Group** for supporting BASD by providing over \$280,000 in grant dollars to fund PLTW across our district!



BHS Health Science CAREER PATHWAY

ONE OF 16 CAREER PATHS AT BHS

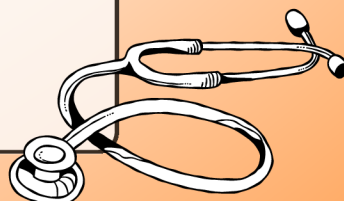
The Health Science Career Pathway is one of many exciting opportunities available to BHS students! Those interested in pursuing a career in the health sciences can gain valuable knowledge, hands-on skills, and industry certifications, all while preparing for a successful future in their chosen health career.

HEALTH SCIENCE COURSE OPPORTUNITIES @ BHS:

- Medical Terminology
- CNA Gateway Course (Dual Credit)
- EMT Gateway Course (Dual Credit)
- Nursing Academy Gateway Course
- Advanced Child Development
- Anatomy & Physiology
- HOSA - Health Occupations Students of America
- Internship with Aurora

"At Burlington High School, we are dedicated to ensuring that our students have access to opportunities within our career pathways, enabling them to build a strong foundation for their future pursuits."

- Amy Levonian (BHS Principal)





CAREER READY

HIGHLIGHTS FROM TECHNOLOGY EDUCATION AT BHS

AUTOS

BHS offers Autos I, II, and III starting in 10th grade. Autos emphasizes engine systems fundamentals, tire service, and brake systems, with a laboratory component featuring 27 competency-based activities such as safety inspections, engine tune-ups, and simple diagnostic techniques. Once students have built a solid foundation of these skills, students engage in a more in-depth study of individual auto components, including the drive train, brake service, ignition service, electronic fuel injection, and engine block and valve service. The laboratory work in Autos II and III focuses on developing more advanced skills using sophisticated tools and testing equipment. The course also covers automotive diagnosis, troubleshooting, and repair, including engine, chassis, and auto body systems, such as bumping, forming, and finishing techniques.

ENGINEERING

All students at BHS have the opportunity to engage in Engineering courses - Intro to Engineering Design (IED) and Intro to Principles of Engineering (POE). In IED, students explore the engineering profession and the engineering design process. They work on hands-on projects, such as designing a new toy or improving an existing product, using 3D modeling software and printers to prototype their designs. POE explores how engineers improve the world through fields like product design, mechanical design, and sustainability, while students use cutting-edge tools in robotics, 3D modeling, programming, and prototyping, with both semesters transcribed by Gateway Technical College.

WELDING

Burlington High School has introduced a Welding Academy in collaboration with Gateway Technical College for the 2024-25 school year. The high school has renovated its welding lab to accommodate these courses offered by GTC. Students will complete a series of six classes, gaining exposure to and developing proficiency in various types of welding. Upon completion, students will earn a Welding, Maintenance, and Fabrication Technical Diploma.

CONSTRUCTION

Architecture, Construction, and Engineering Academy is available to sophomores, juniors, and seniors. The ACE Academy involves a sequence of coursework that introduces students to careers in the architecture, construction, and engineering industries. Students who earn certification of completion will be prepared to enter the ACE trades and/or apprenticeships, or to pursue further education at the technical college or university level.



INCREASE BUSINESS PARTNERSHIPS

By 2029, BASD's goal is to increase our innovative and intentional business partnerships by 20. We are well on our way to accomplishing that goal! One way is through our Youth Apprenticeship program designed to provide high school students with practical, hands-on work experience in specific trades or career fields while in high school. This program combines classroom learning with on-the-job training, allowing students to apply theoretical knowledge in real-world settings.

Youth Apprenticeship Students are aligned to **7 distinct career pathways:** Agriculture, Arts/AV/Communication, Construction, Education, Health Science, Hospitality, & Transportation.

YOUTH APPRENTICESHIP EMPLOYERS

- Adams Power
- ALH Plumbing
- All Good Lawn Pros
- Asphalt Contractors
- BASD / WBSD
- Bassett Racing Wheel
- Carriage Healthcare
- Edge Electric
- Fisco Autobody
- JPK Builders
- KR Contractors
- Lakes Area Marine
- Lois Tire
- Miller Motors
- Performance Tire and Auto
- Plymouth Children's Center
- Square One HVAC
- Walgreens
- Wilson's Prairie View Farm
- Yeti Masonry

Our intentional **increased collaboration with local businesses and organizations** has significantly enriched our Career-Based Learning Experiences for students. Our business partnerships have assisted with mock interviews, material and equipment needs, student internships, guest speakers, demonstrations, and onsite field trips.

BUSINESS PARTNERSHIPS

- Ardagh Group
- Aurora
- Burlington Fire and Police Departments
- Geneva National
- Gateway Technical College
- HJ Faust
- Insinkerator
- LDV / Lynch
- Miller Motors
- Scherrer Construction

Industry-recognized credentials are certifications that demonstrate an individual's competency and skill level in a specific field or trade. These credentials are issued by recognized industry organizations, professional associations, or educational institutions. They signify that a person has met established industry standards and possesses the necessary skills to perform specific tasks or jobs effectively.

We are proud to report that 85 of our students have earned industry-recognized credentials, reflecting their dedication and efforts in their career journeys. These credentials not only enhance students' resumes but also equip them with vital skills that are highly sought after by today's employers.

INDUSTRY-RECOGNIZED CREDENTIALS

- Microsoft Office
- Woodworking Alliance
- Technical Diplomas in:
 - Certified Nursing Assistant (CNA)
 - Cosmetology
 - Emergency Medical Responder (EMR)
 - Emergency Medical Technician (EMT)
 - Welding



HJ Faust has become an awesome business partner working with our students to understand the value and impact of HVAC as a career path.



Miller Motors was one of 5 businesses recognized for the Wisconsin Association for School Boards **Business Honor Roll** along with **Applied Material Solutions, Ardagh Group, Lavelle Industries, and Lynch / LDV.**



SOARING WITH SCIENCE OF READING

Students and staff have taken flight with the Science of Reading in BASD! The Science of Reading is an evidence-based body of research that explores how humans learn to read and the most effective methods for teaching reading. Central to this science is the understanding that reading involves **both phonemic awareness (the ability to recognize and manipulate sounds) and phonics (the relationship between sounds and letters).**

Research emphasizes the importance of **systematic, explicit instruction** in these areas, particularly for struggling readers, to build strong foundations in reading skills. Additionally, the Science of Reading underscores the role of vocabulary, fluency, and comprehension strategies in developing proficient readers.

The Science of Reading emphasizes the **importance of building knowledge for effective reading comprehension.** While phonics and decoding skills are foundational, students' ability to understand and engage with complex texts relies on a strong base of background knowledge. Research shows that teaching content knowledge across subjects, such as science and history, enhances vocabulary and cognitive frameworks, leading to improved literacy and academic success.

"My favorite class activity in ELA has been using the graphic organizers that had me look back in the text to find information about people from the different social classes in the Middle Ages."
4th Grade Student
Dyer Elementary School

"A new vocabulary word I learned is hieroglyphics. It's how they tried to understand each other in Ancient Egypt!"
1st Grade Student, Waller Elementary School

"The coolest thing I've learned about in ELA has been all of the topics about the Incas and Mayans because when we started learning more, I started learning about how people in the past lived."
5th Grade Student
Karcher Middle School

"My favorite activity in ELA was during the stories of Ancient Rome, when we acted out what life for Romans would be like and I got to be a plebeian."
Level 3 Student
Cooper Montessori School

B

BASD School Board has unanimously approved an **OPERATIONAL REFERENDUM** that will be on the April 2025 Ballot.

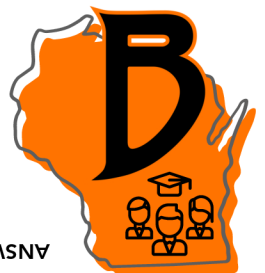


SO, LET'S TEST YOUR REFERENDUM KNOWLEDGE!

- 1** Capital referendum dollars can be used for:
 - A. Funds that are earmarked to cover the costs of building projects.
 - B. To remodel a building.
 - C. Provide needed infrastructure, fixtures, furnishings, and equipment.
 - D. All of the above.
- 2** Operational referendum dollars can be used for:
 - A. Instructional materials, supplies, software, and program resources.
 - B. Staff salaries and benefits.
 - C. Utilities, routine maintenance, furnishings, and needed equipment.
 - D. All of the above.
- 3** There is a budget crisis in the state of Wisconsin for public schools due to:
 - A. Decades of an inadequate funding formula from the state of Wisconsin.
 - B. Lingering effects of historic inflation and rising costs of goods and services.
 - C. Implementation of unfunded mandates.
 - D. Low percentage of reimbursement on costs associated with required special education services to students who qualify.
 - E. All of the above.
- 4** The school funding formula in Wisconsin is based on what districts were spending in 1993-1994 when revenue limits were enacted. Therefore, every school district receives different dollar amounts per student, creating different funding levels between districts.
 - A. True
 - B. False
- 5** The state of Wisconsin has provided for more local control for public education, so what does that mean for BASD taxpayers?
 - A. The BASD community has the ability to determine the value they place on educational programming for students locally in Burlington.
 - B. More local control keeps Burlington tax dollars in Burlington.
 - C. The new "normal" is for school districts to ask the community for additional funding through the use of operational referendums.
 - D. All of the above.
- 6** Why do school districts need an operational referendum?
 - A. Because all school districts are mismanaging funds.
 - B. Because districts just want to increase teacher salaries and add administrators.
 - C. Because it is the tool the state of Wisconsin expects school districts to use to determine the level of funding provided through local tax levy for their community schools.
 - D. All the above. (HINT: It's not this one!)

 **CHECK YOUR
ANSWERS!**

ANSWERS: 1: D, 2: D, 3: E, 4: A, 5: D, 6: C





If you are looking to support BASD through a monetary donation, the BASD Foundation is a newly established non-profit 501(c)(3) with two goals:

1. **Make it simple for our community to donate in support of our schools.**
2. **Support our students and their families with financial assistance.**

For more information, check out the BASD Foundation page (located on our BASD website) at:

www.basdfoundation.org



Follow BASD at:



@BurlingtonAreaSchoolDistrict



Subscribe to the monthly BASD newsletter:

NEWSLETTER



<https://tinyurl.com/h3c8dx5d>

THANK YOU!

Thank you to our school board who volunteers their time collaborating with the community and staff to continually work to grow as a school district for the betterment of the Burlington community.



Taylor Wishau, Board President
Marlo Brown, Vice President
Peter Turke, Treasurer
Paul Kobernick, Clerk
Rosanne Hahn, Board Member
Noah Strohm, Board Member
Aubrey Thompson, Board Member

COMMUNITY CONNECTIONS SERIES

**SAVE!
THE DATE!**

WHAT



We would like to invite any and all community members to attend the Community Connections Series to **learn additional information about the school district.** Also, we would love to gain the community's feedback and have the opportunity to answer any questions people have about BASD.

WHERE



The series will be held at the BASD District Office Board Room.

- **Address: 209 Wainwright Avenue, Burlington**

TIME



The series will take place at:

☀️ 7:00-8:00 AM

&

🌙 7:00-8:00 PM

Time will be used to share information about the district along with time for the community to ask questions and/or engage in discussion.

DATES



TOPICS



- **January 22** - District operations, facilities, safety, & security
- **February 19** - School funding & budgeting
- **March 5** - Operational Referendum
- **April 9** - District communications, employee retention & recruitment
- **May 7** - Business partnerships & community engagement

