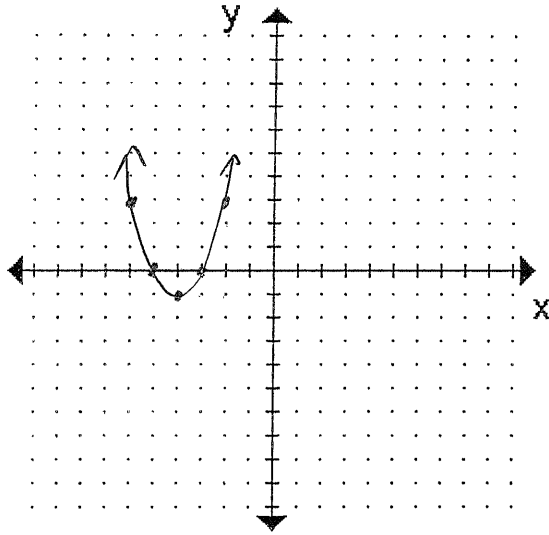


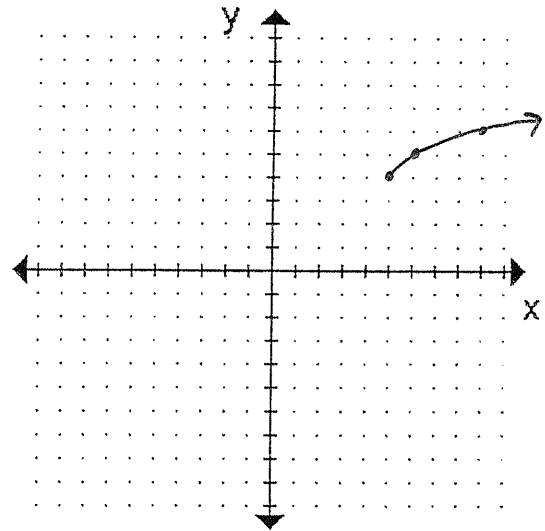
FST 3-1 thru 3-3 Quiz Review #2

1) Graph without a calculator

a)  $y = (x + 4)^2 - 1$   
 L4    ↓ 1



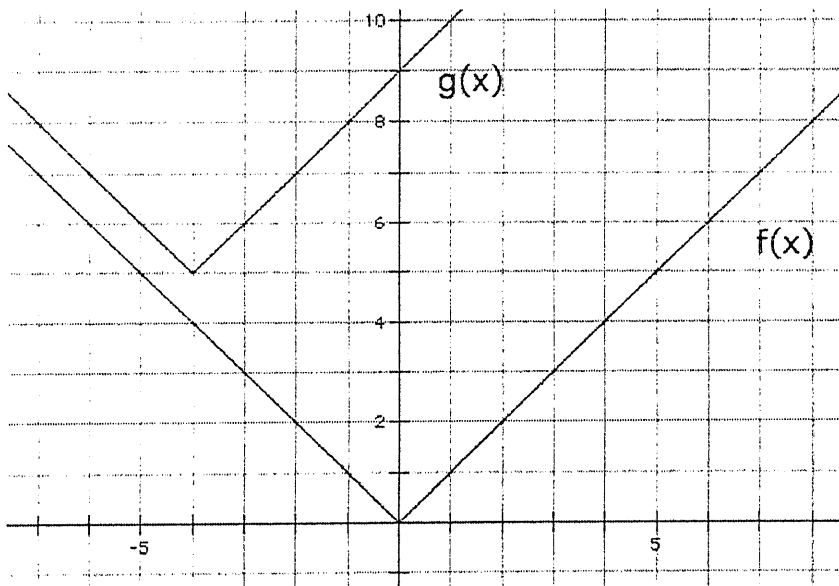
b)  $y = \sqrt{x - 5} + 4$   
 R5    ↑ 4



2) Using the parent function  $y = x^2$ , write the equation for its image under the translation rule  $T(x, y) \rightarrow (x - 4, y + 2)$

$$y = (x + 4)^2 + 2$$

3) Give an **equation** for the transformation that maps the graph of  $f$  onto the graph of  $g$



L 4

↑ 5

$$y = |x + 4| + 5$$