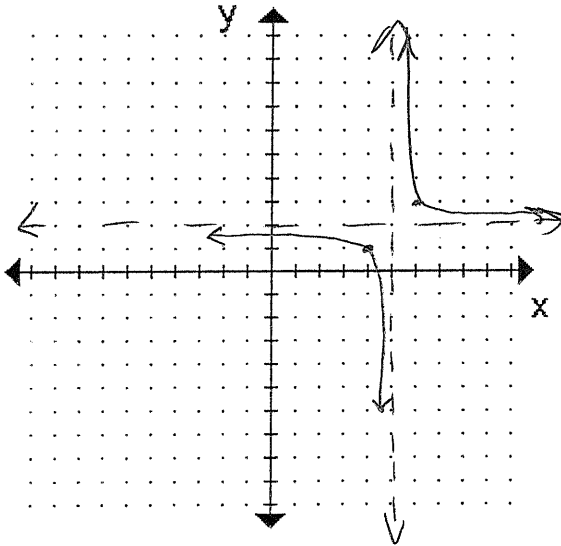


FST 3-2 Graphing Hyperbola

$$y = \frac{1}{x-5} + 2$$

↗ up 2
↘ RS



a) Graph without a calculator

b) State the asymptotes.

$$x = 5$$

$$y = 2$$

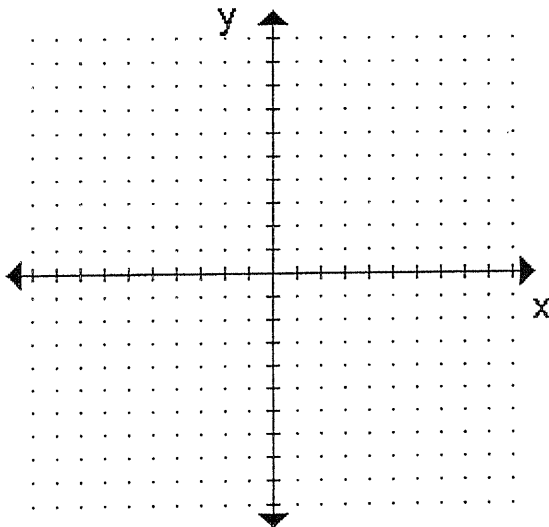
c) State the domain and range

$$D: \{x \mid x \neq 5\}$$

$$R: \{y \mid y \neq 2\}$$

FST 3-2 Graphing Hyperbola

$$y = \frac{1}{x-5} + 2$$



a) Graph without a calculator

b) State the asymptotes.

c) State the domain and range