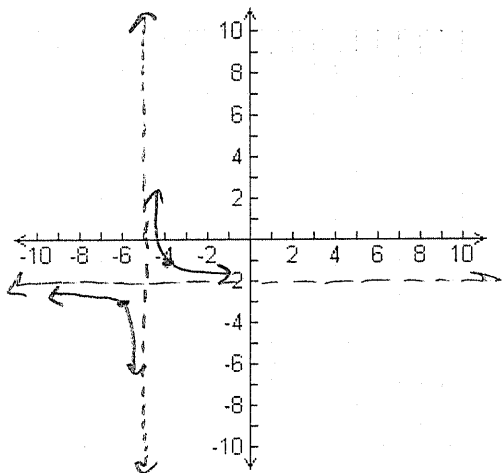


Pre Calc 3-4 Warm Up 2

$$1) y = \frac{1}{(x+5)} - 2 \quad \downarrow 2$$

L5



a) Identify any symmetry

Point $(-5, -2)$

b) Identify asymptotes

$$x = -5$$

$$y = -2$$

c) State Domain & Range

$$D: \{x \mid x \neq -5\}$$

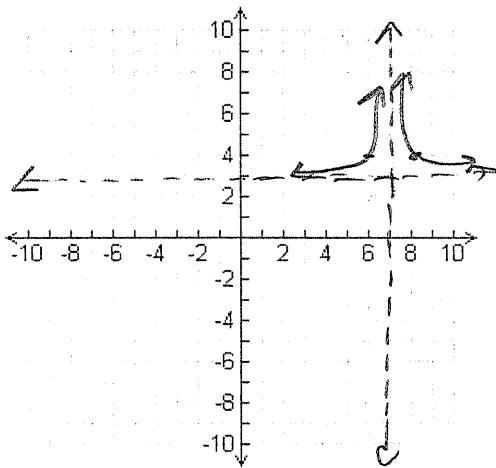
$$R: \{y \mid y \neq -2\}$$

d) Describe transformation from the parent function

Left 5
Down 2

$$2) y = \frac{1}{(x-7)^2} + 3 \quad \uparrow 3$$

R7



a) Identify any symmetry

Line $x = 7$

b) Identify asymptotes

$$x = 7$$

$$y = 3$$

c) State Domain & Range

$$D: \{x \mid x \neq 7\}$$

$$R: \{y \mid y > 3\}$$

d) Describe transformation from the parent function

Right 7
up 3