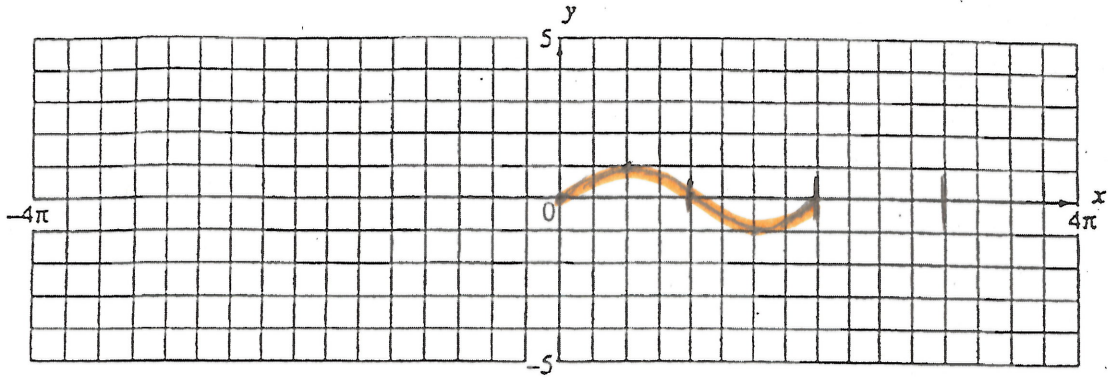


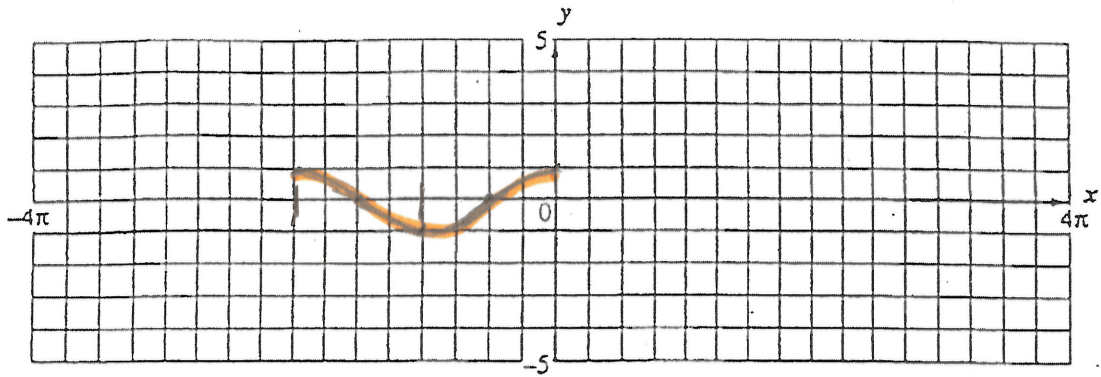
### FST Trig 3.1 Exit Slip

Make a sketch of each trigonometric function without using a calculator.

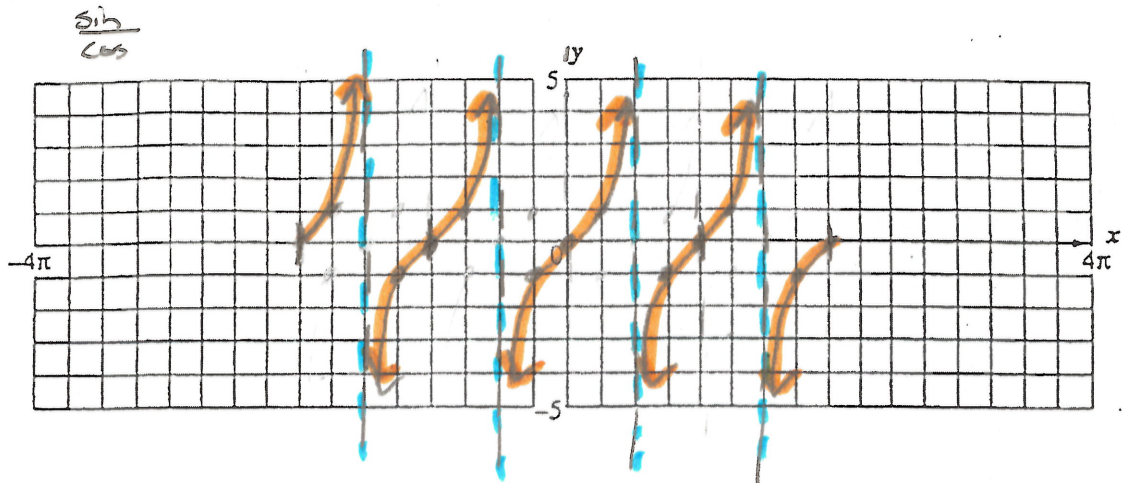
1)  $y = \sin x \quad 0 \leq x \leq 2\pi$



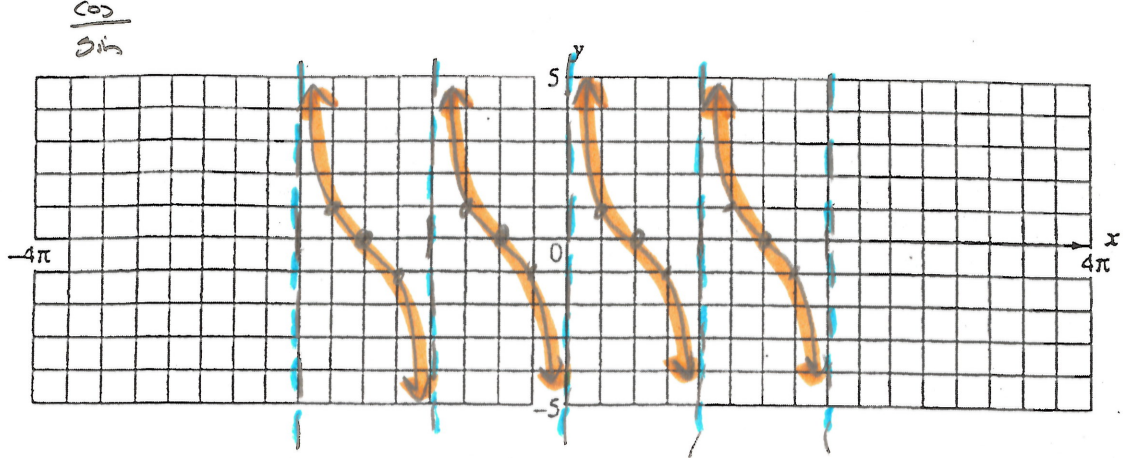
2)  $y = \cos x \quad -2\pi \leq x \leq 0$



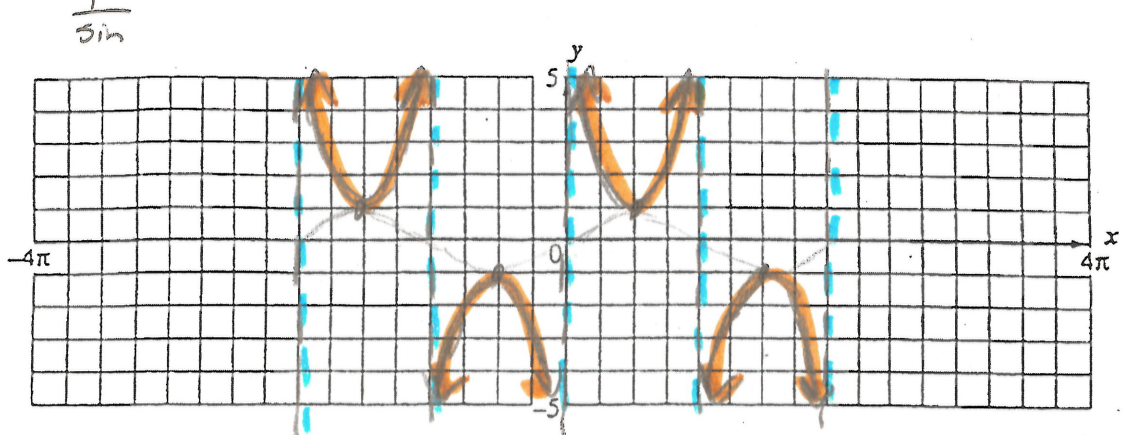
3)  $y = \tan x \quad -2\pi \leq x \leq 2\pi$



4)  $y = \cot x \quad -2\pi < x < 2\pi$



5)  $y = \csc x \quad -2\pi < x < 2\pi$



6)  $y = \sec x \quad -2\pi \leq x \leq 2\pi$

