

Trig Sec 3-1 p. 141 (1-12), (15-20) Graph p. 142

① $\cos \rightarrow 2\pi$, $\sec \rightarrow 2\pi$, $\tan \rightarrow \pi$

② $\sin \rightarrow 2\pi$, $\csc \rightarrow 2\pi$, $\cot \rightarrow \pi$

③ A) $\sin x \rightarrow \pm 1$ B) $\cot x \rightarrow \pm \infty$ C) $\sec x \rightarrow \begin{matrix} 1 \text{ to } +\infty \\ -1 \text{ to } -\infty \end{matrix}$

④ A) $\cos x \rightarrow \pm 1$ B) $\tan x \rightarrow \pm \infty$ C) $\csc x \rightarrow \begin{matrix} 1 \text{ to } +\infty \\ -1 \text{ to } -\infty \end{matrix}$

⑤ $\cos x \rightarrow -\frac{3\pi}{2}, -\frac{\pi}{2}, \frac{\pi}{2}, \frac{3\pi}{2}$

⑥ $\sin x \rightarrow -2\pi, -\pi, 0, \pi, 2\pi$

⑦ $\tan x \rightarrow -2\pi, -\pi, 0, \pi, 2\pi$

⑧ $\cot x \rightarrow -\frac{3\pi}{2}, -\frac{\pi}{2}, \frac{\pi}{2}, \frac{3\pi}{2}$

⑨ $\sec x \rightarrow \text{none}$

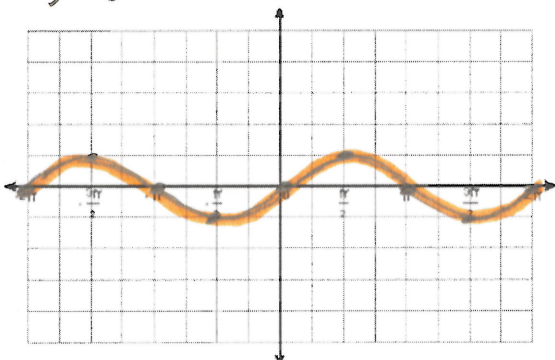
⑩ $\csc x \rightarrow \text{none}$

⑪ A) none B) $-2\pi, -\pi, 0, \pi, 2\pi$ C) $-\frac{3\pi}{2}, -\frac{\pi}{2}, \frac{\pi}{2}, \frac{3\pi}{2}$

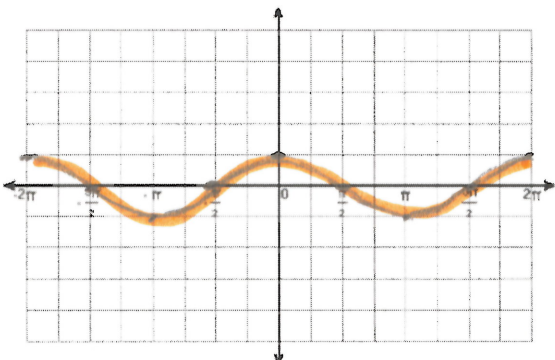
⑫ A) none B) $-\frac{3\pi}{2}, -\frac{\pi}{2}, 0, \frac{\pi}{2}, \frac{3\pi}{2}$ C) $-2\pi, -\pi, 0, \pi, 2\pi$

Trig Sec 3-1 p. 141 (15-20)

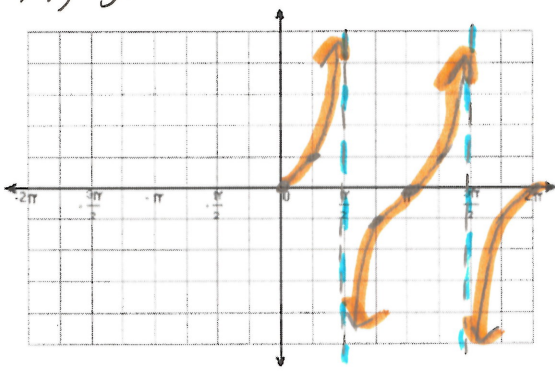
15) $y = \sin x \quad -2\pi \leq x \leq 2\pi$



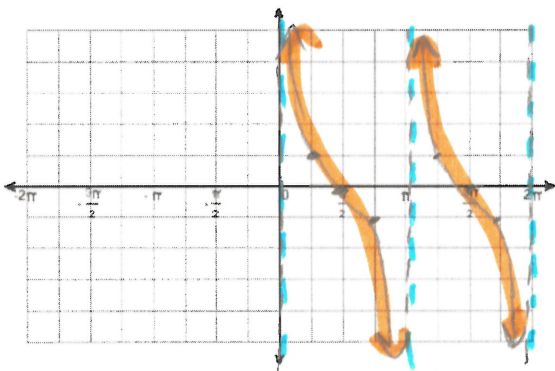
16) $y = \cos x \quad -2\pi \leq x \leq 2\pi$



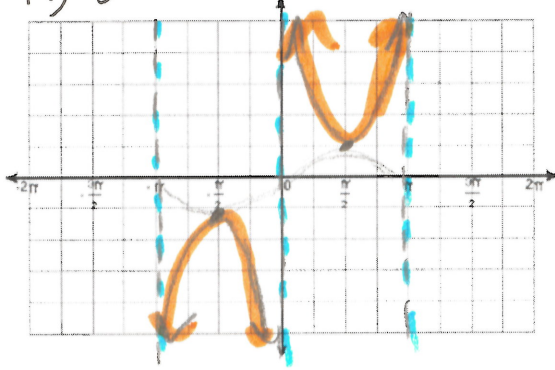
17) $y = \tan x \quad 0 \leq x \leq 2\pi$



18) $y = \cot x \quad 0 < x < 2\pi$



19) $y = \csc x \quad -\pi < x < \pi$



20) $y = \sec x \quad -\pi \leq x \leq \pi$

