

FST Trig 3.2, 3.3 Exit Slip

Name _____

Graph the following Trig function.

$$y = -2 + 3\sin(2x - \pi) \quad -\pi \leq x \leq 2\pi$$

↓ 2 Amp: 3

$$P = \frac{2\pi}{2} = \pi$$

$$\begin{array}{l} \text{Start} \\ 2x - \pi = 0 \end{array}$$

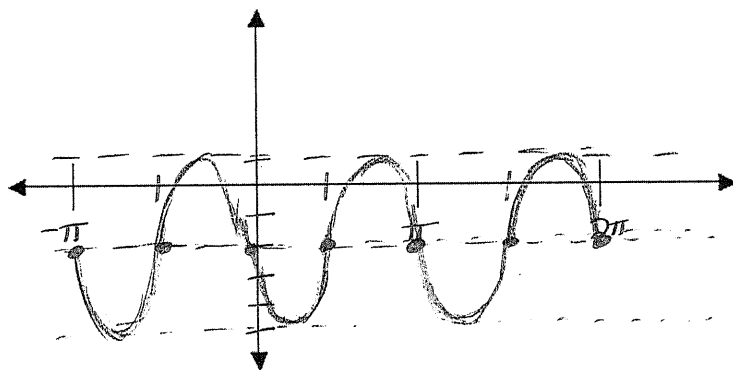
$$\frac{2x}{2} = \frac{\pi}{2}$$

$$x = \frac{\pi}{2}$$

$$\begin{array}{l} \text{End} \\ 2x - \pi = 2\pi \end{array}$$

$$\frac{2x}{2} = \frac{3\pi}{2}$$

$$x = \frac{3\pi}{2}$$



FST Trig 3.2, 3.3 Exit Slip

Name _____

Graph the following Trig function.

$$y = -2 + 3\sin(2x - \pi) \quad -\pi \leq x \leq 2\pi$$

